

THE COONTIE CRIER

Newsletter of The Broward Chapter of the Florida Native Plant Society
Dedicated to the promotion and preservation of Native Plants!

<http://www.NPSBroward.org>
GoNative@NPSBroward.org

APRIL, 2012



COONTIE CHAPTER MEETING

Wednesday, April 11th (2nd Wed.)

Agriculture Extension Service, 3245
College Av, Davie

7:00p – 7:30p Snack & Chat
7:30p – 8:30p **GUEST SPEAKER**

Lisa Jameson,
Invasive Species
Biologist, “Removing
Invasive Exotics in
Loxahatchee”

Board Officers & Directors

President: Kay Taylor

Vice Pres: Martha Martinez

Secretary:

Treasurer:

Director & Program Coordinator:

Eddie Yi

Director & Webmaster: Pete Taylor

Newsletter: Richard Brownscombe

LOOKING FORWARD

May 9, Speaker, Dr. Michael Orfanedes, “Pruning”

June 13, Annual Pot Luck & Election

Thank you! We have many new memberships through the easy-to-use Florida Native Plant Society web page:

<https://www.fnps.org/secure/membership.php>

and many renewal memberships. Thank you for your help in protecting native plants and wildlife in Broward County.

Loxahatchee National Wildlife Refuge

“ With over 221 square miles of Everglades habitat, the Loxahatchee Refuge is home to the American alligator and the critically endangered Everglade snail kite. In any given year, as many as 257 species of birds may use the Refuge's diverse wetland habitats,” visit <http://www.fws.gov/loxahatchee/> for more photos and information about the Loxahatchee. Visit the Loxahatchee with us, later this month. Soon our website will post updated field trip details:

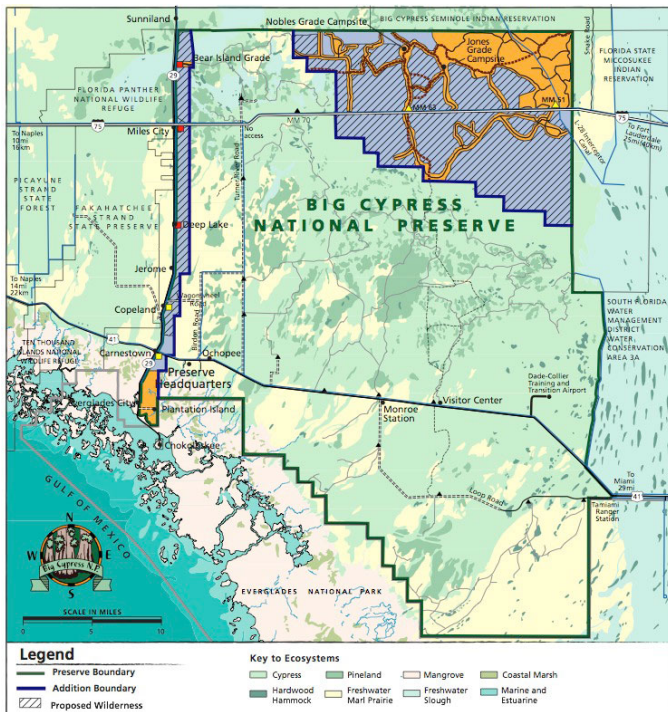
<http://www.npsbroward.org/Pete/PIX/E/NPS/lores/sked.htm>

Lisa Jameson is Invasive Species Biologist at the Arthur R. Marshall Loxahatchee National Wildlife Refuge

Recap of Our Big Cypress Hike

What a beautiful day for a hike! The trail was definitely challenging, but well worth it. Jack spotted a dainty Candy Root, and Rosie found several 10-petal Marsh Pinks. Following bobcat, alligator, and deer tracks, we found ourselves in the middle of a fairly dry cypress swamp. Cardinal and Potbelly air plants draped like furs over branches and orchids were abundant. Moccasins watched us and we kept a careful eye on them (the ones we could see that is!). The Cowhorn orchid was the showiest, but several more rare ones were spotted (you'll have to ask Jack about those!). Other notables included a brilliant Scarlet red Milkweed, the beautiful white Alligatorlily, the delicate purple Glade Lobelia, and daisy-like Everglades Sneezeweed. Thanks to Eddie and Marianna for introducing us to a wonderful Cuban restaurant. We were hungry and tired and the tamales hit the spot! Thanks to Rosie for being slim enough to shimmy under the fence at IFAS and rescue our cars when we returned. Note for future outings: they DO lock the gates. And finally, a BIG thanks to Jack for leading us. Oh, and for those of you who missed it, he's planning a similar hike next year, so stay posted! (See photos of the Marsh Pinks, Tillandsia, and Cowhorn orchid on the next page.)





Invitation from the President of the Fort Lauderdale Garden Club

Please accept my invitation to the "Standard Flower Show" presented by the Fort Lauderdale Garden Club. It is a judged show in which the Garden Club members showcase their horticulture and design talents. You will be surprised and delighted by the wide variety and superior quality of the plants, flowers, cuttings and designs on display. Dates: April 21 and April 22, Hours: 10 am to 4 pm, Cost: Entrance to the show is free. A fee is charged for admission to the park. Location: The Garden Center of the Fort Lauderdale Garden Club which is located inside Birch State Park at 3109 E. Sunrise Boulevard, Fort Lauderdale, Florida 33304

In addition to our Flower Show, you will be able to tour our Garden and browse our plant sale. Also, the park is celebrating Earth Day on the 21st, and you will find further information on that event @ <http://www.floridastateparks.org/hughtaylorbirch/events.cfm>. Hope to see you there, Roswitha Sidelko.

Send corrections, photos, ideas concerning local native plants, or general feedback to GoNative@NPSBroward.org.